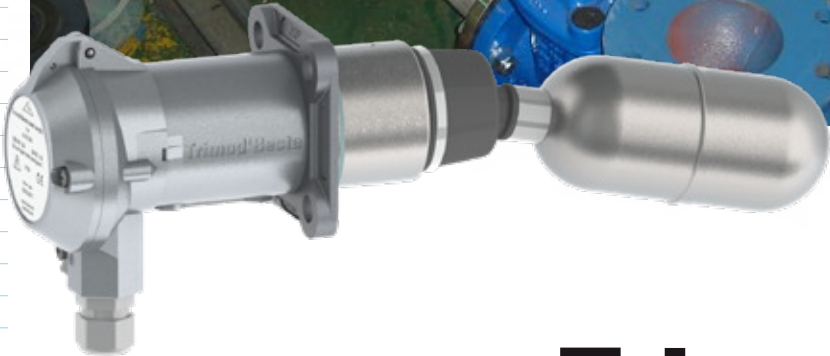


**APPLICATION IN WATER MANAGEMENT
VACUUM WASTE COLLECTION SYSTEM**



Trimod Besta

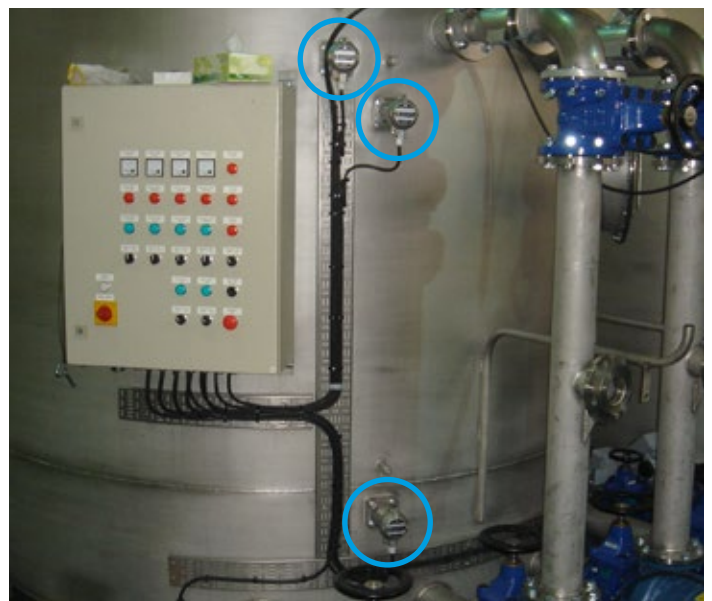
Level measurement A brand of Bachofen AG
www.trimodbesta.com

Vacuum Waste Collection Systems

A worldwide acting manufacturer of vacuum toilet and waste water treatment systems for ships and trains has used Trimod´Besta switches for more than 20 years. They use our level switches for a critical application in waste collecting tanks under vacuum conditions. Thousands of switches are on duty in ships and trains around the globe.

Type A 01 051E15 is a standard level switch with a modified bellows assembly designed for use in sewage tanks under vacuum conditions.

The new vacuum tank unit heavy duty series is a vacuum tank solution for civil and military applications, in which the traditional method is enhanced by new pump technology. Energy consumption of the vacuum tank units is reduced by more than 50% compared to the competing technology. An extra vacuum reservoir and powerful pumps make complex new piping designs possible on large vessels even with only one vacuum generation unit. In vacuum tank units separate discharge pumps feed waste water mixing tanks in batches in combination with advanced treatment solutions. The tank units now require less maintenance, also because of the very robust Trimod´Besta level switches.



Requirement for level switches

- Low installation and no maintenance cost
- Black water tank with solid waste
- Vacuum condition

Why Trimod´Besta?

Unique reliability combined with high quality guarantee undisturbed operation for years under vacuum conditions. No service costs occur.

Installed level switch types

Type A 01 051E15

E15: describes application specific modification

