

# SR 12

## Dimensions

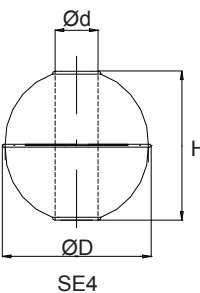
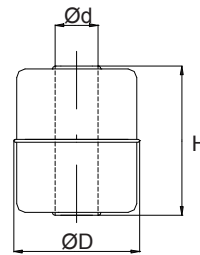
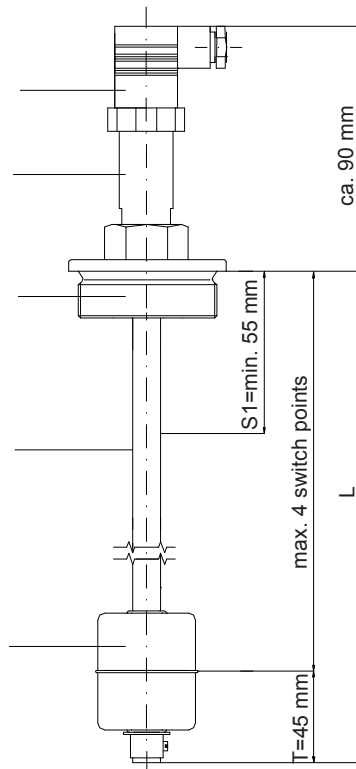
Electrical connection  
Coupler plug  
DIN 43650

Tube Ø 27 mm

Process connection  
G1½, G2",  
Flange DN50 PN16

Tube Ø 12 mm

Cylindrical or  
spherical float



T = Dead centre



Float type	Dimensions			Max. operating pressure (MPa)	Max. operating temperature (°C)	Medium density kg/m <sup>3</sup>	Material
	Ø D (mm)	Ø d (mm)	H (mm)				
SE3 Cylindrical float	44	15	52	1,6	180	≥ 750	1.4571
SE4 Spherical float	52	15	52	4,0	180	≥ 750	1.4571

## Technical data

**Max. Power**

**Opener / Closer:**

230 V AC; 100 VA; 1 A AC  
230 V DC; 50 W; 0,5 A DC

**Change-over switch:**

230 V AC; 40 VA; 1 A AC  
230 V DC; 20 W; 0,5 A DC

**Switch function**

Opener / closer /  
change-over switch  
with a rising liquid level

**Switch point number**

max. 4 switch points  
> 4 switch points on request

**Installation position**

vertical, ± 30°

**Electrical connection**

coupler plug DIN 43650,  
other types on request

**Medium density**

≥ 750 kg/m<sup>3</sup>

**Temperature**

-30°C to +100°C

**Protection**

IP 65

**Max. pressure**

4.0 MPa

**Tube length L**

Standard: up to 6000 mm,  
> 6000 mm on request

**Process connection**

Standard: G 1½", G 2",  
Flange DN50 PN16  
other types on request

**Product overview / Order table**

**SR 12**

**Electrical connection**

- A Coupler plug, DIN 43650
- X Other types on request

**Process connections** (installation: vertical, ± 30°)

- A Fixing screw thread G 1 1/2", 1.4571
- B Fixing screw thread G 2", 1.4571
- C Flange DIN 2527, Form B, DN 50 PN 16, 1.4571
- X Other types on request

**Tube length L** (see dimensioned diagram), Tube in 1.4571

Tube length from sealing face of process connection  
 Tube length L ≤ 6000 mm; L > 6000 mm on request  
 Dimensions in mm

**Float types**

- Z SE3 (cylindrical float Ø44 in 1.4571)
- K SE4 (spherical float Ø52 in 1.4571)
- X Other types on request

**Switch point number**

(see dimensioned diagram)

**Switch function** ( with a rising liquid level )

- O Opener
- S Closer
- U Change-over switch

**Switch position**

Switch position from sealing face of process connection in mm

SR 12					
-------	--	--	--	--	--

S1		
S2		

⋮

Edition: 10/2015. Technical specifications are for information only and may change without notice.