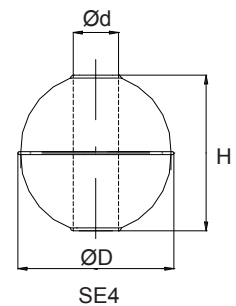
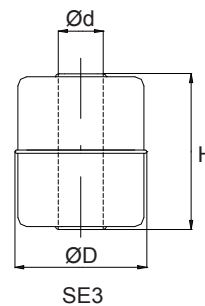
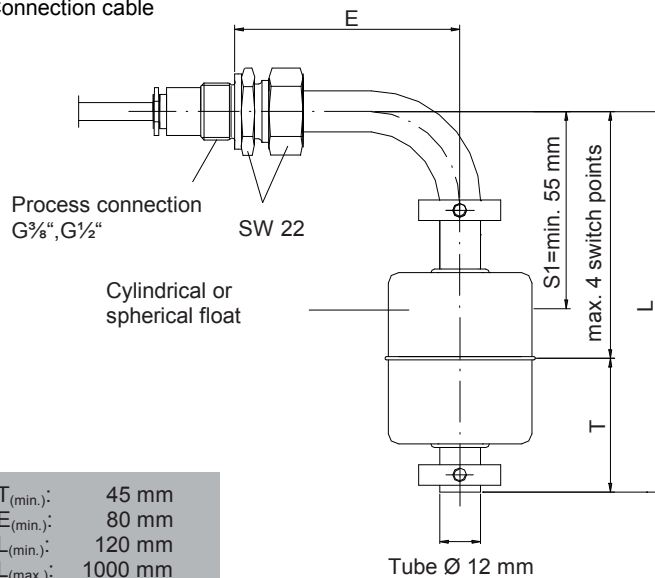


# SR 20

## Dimensions

Connection cable



Float type	Dimensions			Max. operating pressure (MPa)	Max. operating temperature (°C)	Medium density kg/m <sup>3</sup>	Material
	Ø D (mm)	Ø d (mm)	H (mm)				
SE3 Cylindrical float	44	15	52	1,6	180	≥ 750	1.4571
SE4 Spherical float	52	15	52	4,0	180	≥ 750	1.4571

## Technical data

<b>Max. Power</b>	<b>Opener / Closer:</b>	<b>Switch point number</b>	max. 4 switch points > 4 switch points on request
	230 V AC; 100 VA; 1 A AC 230 V DC; 50 W; 0,5 A DC	<b>Installation position</b>	float vertical, ± 30°
<b>Switch function</b>	<b>Change-over switch:</b>	<b>Temperature</b>	-30°C to +150°C
	230 V AC; 40 VA; 1 A AC 230 V DC; 20 W; 0,5 A DC	<b>Protection</b>	IP 54
	<b>Opener / closer / change-over switch with a rising liquid level</b>	<b>Max. pressure</b>	4.0 MPa
	<b>Medium density</b>	<b>Tube length L</b>	Standard: up to 1000 mm
	≥ 750 kg/m <sup>3</sup>	<b>Process connection</b>	Standard: G 3/8", G 1/2", other types on request

Product overview / Order table

SR 20

**Process connections** (installation: vertical, ± 30°)

- A Fixing screw thread G 3/8", 1.4571
- B Fixing screw thread G 1/2", 1.4571
- X Other types on request

**Tube length L** (see dimensioned diagram), Tube in 1.4571  
Tube length L ≤ 1000 mm  
Dimensions in mm

**Tube length E** (see dimensioned diagram), Tube in 1.4571  
Dimensions in mm

**Float types**

- Z SE3 (cylindrical float Ø44 in 1.4571)
- K SE4 (spherical float Ø52 in 1.4571)
- X Other types on request

**Temperature range**

- N -30° to +80 °C
- H -30° to +150°C

**Switch point number**  
(see dimensioned diagram)

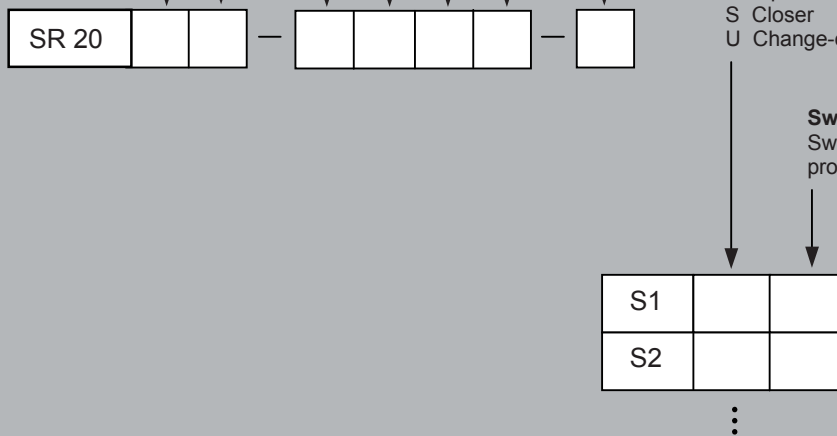
**Cable length**  
Dimensions in m

**Switch function** ( with a rising liquid level )

- O Opener
- S Closer
- U Change-over switch

**Switch position**

Switch position from sealing face of process connection in mm



**Attention:** Designs without earthing connection – use low voltage only or external protective earth.

Edition: 10/2015. Technical specifications are for information only and may change without notice.