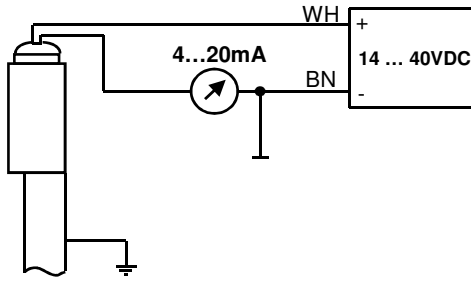


External electrical connections



Description:

Transmitter, 4...20mA current output for use with WEKA Visual Level Indicators media temperature ≤ 250 °C

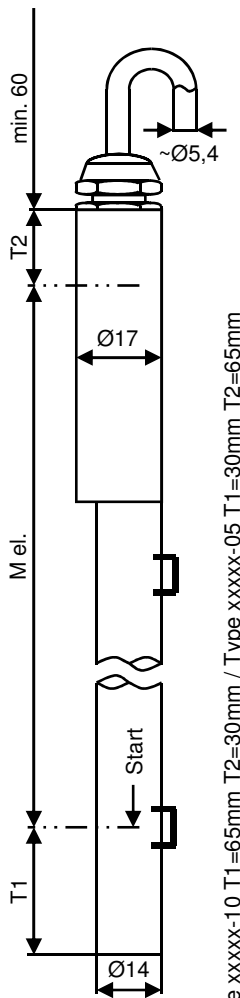
The transmitter is mounted outside of the float chamber opposite to the indication rail (see datasheet 20010501). The magnet inside the float activates the reed switches in the transmitter, depending on the level of liquid in the float chamber, thereby changing the effective value of a resistance network. The resulting voltage output is converted by an internal electronic circuit to a 4...20mA signal. If the liquid level rises above the measuring range of the transmitter (30 mm) the output signal jumps to 115% (ca. 22,5mA) and remains on that limit.

Product code:

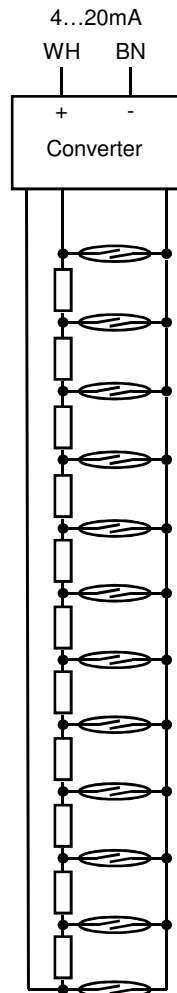
31967-W-010-10 10mm resolution
31967-W-010-05 5mm resolution
M el. = Measuring length in mm

Dimensions

Internal circuit



Type xxxx-10 T1=65mm T2=30mm / Type xxxx-05 T1=30mm T2=65mm



Resolution

31967-W-010-10 10mm
31967-W-010-05 5mm

Transmitter housing tube dia.

Ø 14 / 10 Ø 17 / 14

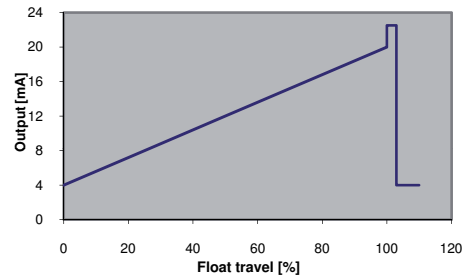
Measuring length "M el."

200mm (min.) to 4000mm (max.)

Longer M el. available with types 34067, 34167, and 34267 (more piece design)

Signal output

4...20mA current loop



Loop supply voltage

14 ... 40VDC

Operating temperature

Media temperature -50 °C ... +250 °C
Ambient temperature (Ta) -20 °C ... +50 °C

Enclosure

IP68 - 10bar (EN60529)

Materials

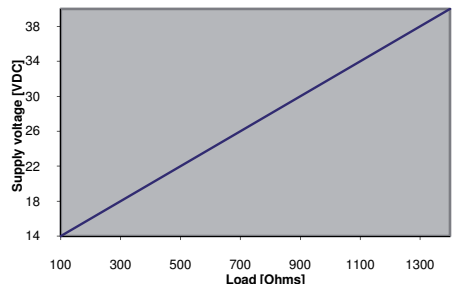
Housing tube Stainless steel 316 / 316L
Cable gland Brass: nickel plated
- Seal FKM / Fluoroelastomere
Cable (Standard 5m) Silicone: red; 2 x 0.5mm², Ø ~ 5.4mm, largely resistant to oils/petroleum product

Type label

Polyester: silver, black printing

Output load

max. 100Ω at 14VDC
max. 1.4KΩ at 40VDC



Fixation

When ordering level indicators with transmitters, hose clamps are included.
When ordering transmitters as spare parts, hose clamps are never included and must be ordered separately.
In case of ordering hose clamps pipe size must be indicated:

For pipe diameter	30...40mm	Part no.	80648
For pipe diameter	40...57mm and 57...80mm	Part no.	84043

Note

Please read the instructions in our datasheet 20010501 before performing installation.