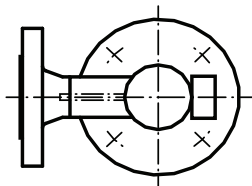
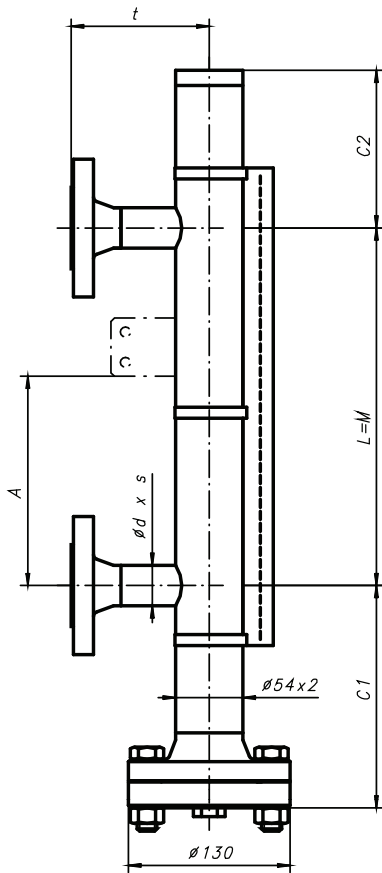


Design meets the requirements of PED 97/23/EC and harmonized standards



Float extension lower / upper:

	C1:	C2:
Standard	190	135

C1 & C2 shorter or longer, if out of standard range or with damping springs

Standard flange connections:

	EN	ANSI/ISO
Connection pieces, d*s:		
DN15:	21.3*2.0	21.3*2.0
DN20:	26.9*2.0	26.9*2.0
DN25:	33.7*2.0	33.7*2.0
≥ DN32 *2):	33.7*2.0	33.7*2.0
Dimension t:		
DN15:	110	124
DN20:	110	127
DN25:	110	132
≥ DN32 *2):	tba on request 3):	

Purchase Order Data:

Company:		Project:	
Purchase order no.:			
Quantity:		Tag no.:	

Operating Conditions

Fluid:			
Density:	≥ 0.55g/cm3	g/cm3:	
Viscosity:	≤ 600cSt	cSt:	
Operating pressure:	max. 50bar(g) @ 20°C *1)	bar(g):	
Design pressure:	"	bar(g):	
Operating temperature:	-80°C ... +400°C *1)	°C:	
Design temperature:	"	°C:	
Connecting Distance "L":	max. 5600mm (one-piece design)	mm:	

Design and Materials:

Float chamber:	316/316L	Screws and nuts:	A2-70, ISO 3506
Float:	Ti alloy (Standard)	type no.:	37943-2 / -3 / -4
		type no.:	

other materials and densities see float selection diagram or on request

Damping spring top and bottom, 1.4401	No.:	27399	<input type="checkbox"/>
Gaskets:	Fibre compound Aramid/NBR (<150°C)	Standard	<input type="checkbox"/>
	PTFE, non reinforced, raked (<250°C)		<input type="checkbox"/>
	Graphite incl. reinforcing net in ss 316/316L (<400°C)		<input type="checkbox"/>

Process connections:

EN-Connecting Flanges acc. EN1092-1 (Standard):	DN15:	<input type="checkbox"/>
- EN1092-1/11 B1/DNxx/PN40/316L	DN20:	<input type="checkbox"/>
- wn-flange, RF, Rz=12,5 ... 50µm, turning	DN25:	<input type="checkbox"/>

ANSI/class300 (= ISO/PN50) - connecting flanges:

- ANSI/ASME B16.5 / ISO-DIS7005-1.2, type 11/B1	ANSI 1/2" resp. ISO DN15 :	<input type="checkbox"/>
- wn-flanges, RF SF, Rz=12,5 ... 50µm, turning	ANSI 3/4" resp. ISO DN20 :	<input type="checkbox"/>
	ANSI 1" resp. ISO DN25 :	<input type="checkbox"/>

Other Connections

Drain connection thread (Standard) (for vent see price list):

G3/8" (ISO7-1/ISO228-1) with plug R3/8" (ISO7-1) and PTFE tape (<=250°C)	<input type="checkbox"/>
G3/8" (ISO7-1/ISO228-1) with plug G3/8" (ISO228-1) and NiCu gasket (>250°C)	<input type="checkbox"/>

Indication Rail:

PC, IP65 (<150°C)	Flaps: red-silver	No.:	34837	Standard	<input type="checkbox"/>
PC, IP68, inert gas (<150°C)	Flaps: red-silver	No.:	41008		<input type="checkbox"/>
Al/PC, IP54 (<250°C)	Flaps: red-silver	No.:	34560		<input type="checkbox"/>
Al/glass, IP54 (<400°C)	Flaps: black-silver	No.:	37100		<input type="checkbox"/>
Special	Flaps:	No.:			<input type="checkbox"/>

Accessories (installation instructions see spec. no. 20010501)

Fixation bracket no. 26936:	dimension "A" [mm]:	
Magnetic switch:	quantity:	type:
Transmitter:	resolution [mm]:	type:
	measuring length M _{el} [mm]:	
Converter:	type:	
Further accessories:		

Test reports and certificates:

EN10204:2004-3.1 certificate for used materials of the float chamber:	<input type="checkbox"/>
---	--------------------------

Special executions and notes:

Notes:

- *1) Refer to pressure-temperature rating! Lowest pressure-temperature rating of any connecting flange or fitting will set the limitation!
- *2) Test pressure will be specified according to WEKA specification AW 2.1.2.
- *3) With special reduction flanges.
- *3) Depending on size of connecting flanges.

All indicated dimensions in mm. All dimensions are only valid on VLI in standard execution.